

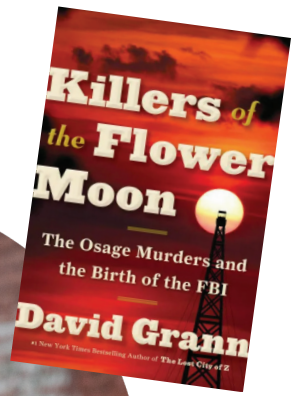
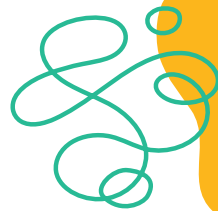


Attend the Mary S. Stern Lecture with
**BESTSELLING AUTHOR AND
 STAFF WRITER AT THE NEW YORKER**

David Grann

Wednesday, September 25
 at Aronoff Center for the Arts

Tickets available
 at CHPL.org/stern



Killers of the Flower Moon by David Grann

READERS GUIDE

Provided by Penguin Random House.

The questions, discussion topics, and suggestions for further reading that follow are designed to enhance your group’s discussion of *Killers of the Flower Moon*, the New York Times bestseller that delves into a dark and haunted corner of American history.

Introduction

At the end of the nineteenth century, the Osage Indians were driven onto a presumed worthless expanse of land in northeastern Oklahoma. But their territory turned out to be atop one of the largest oil deposits in the United States; to obtain that oil, prospectors were required to pay the tribe for leases and royalties. By the 1920s, the members of Osage Nation had become the wealthiest people per capita in the world. And then the Osage began to die under mysterious circumstances.

As the death toll climbed to more than twenty-four and local law enforcement made little progress, the fledgling Federal Bureau of Investigation was called in. Headed by agent Tom White, the investigation was closely overseen in Washington by the Bureau’s ambitious newly appointed director, J. Edgar Hoover.

Exposing the turbulent history of the relations between whites and the Osage Nation over the course of more than a century, *Killers of the Flower Moon* provides a disturbing look at the deep-seated prejudices that continue to cast a shadow over our country.

Cast of Characters

The Family -----

Mollie Burkhart, a wealthy Osage woman whose family was targeted

Anna Brown, Mollie’s oldest sister, a divorcee who spent a lot of time in the reservation’s rowdy boomtowns

Lizzie, Mollie's mother, deeply attached to Osage traditions even as the world around her changed; she suffered a slow, inexplicable death

Rita, Mollie's sister, and her husband, Bill Smith

Ernest Burkhart, Mollie's white husband, the father of her three children, and her official financial guardian

Bryan Burkhart, Ernest's younger brother

William Hale, Ernest's uncle, a self-made man of great wealth and staggering power; revered by many people as "King of the Osage Hills"

Margie Burkhart, the granddaughter of Mollie and Ernest Burkhart; she shared her father's memories of the "Reign of Terror" with Grann as well as stories about Mollie's and Ernest's lives in later years

The Bureau of Investigation -----

J. Edgar Hoover, the twenty-nine-year-old newly appointed director of the Bureau of Investigation; he saw the Osage cases as a way to redeem the bureau's bad reputation and advance his own career

Tom White, an old-style frontier lawman and former Texas Ranger who was put in charge of the investigation

John Wren, recruited by White, he was then one of the few American Indians (perhaps the only one) in the bureau

Other Characters -----

Barney McBride, a white oilman who sought help for the Osage

W.W. Vaughan, a lawyer who worked closely with private detectives trying to solve the Osage cases

James and David Shoun, local doctors (and brothers)

Scott Mathis, owner of the Big Hill Trading Company and a close friend of both Mollie Burkhart and William Hale; he managed Lizzie's and Anna's financial affairs and administered Anna's estate

James Bighart, the legendary chief of the Osage who negotiated the prescient treaty with the government to retain mineral rights for the tribe

George Bighart, James's nephew who gave information to W.W. Vaughan

Henry Roan, briefly married to Mollie when they were young; he borrowed heavily from William Hale and made Hale the beneficiary of his insurance policy

Questions and Topics for Discussion

1. What do the contemporary media reports on the wealth and lifestyle of the Osage reflect about white perceptions of Native Americans? In what way do they lay a foundation for the way the murders and mysterious deaths were treated by law enforcement?
2. What was your first impression of William Hale? How does Grann bring to life his strengths and appeal, as well as the darker side of his nature? What qualities does he share with people who achieve power and influence today?
3. How did you respond to the description of law enforcement in America during the 1920s? What elements most shocked or surprised you? What made the situation in Osage County particularly chaotic? What effect did this have on the investigations into the deaths of Anna Brown and Charles Whitehorn?

4. What does Grann's account of the relationship between the United States government and Native Americans contribute to your understanding of the country's history? How did government policies affect individuals like Mollie and her family? What does Grann capture in his description of Lizzie's death: "Lizzie's spirit had been claimed by Jesus Christ, the Lord and Savior, and by Wah'Kon-Tah, the Great Mystery"?
5. Discuss the circumstances that distinguished the Osage from other Native American tribes, including the actions taken by tribal leaders early in the century; the influx of white settlers and oil prospectors; the granting of headrights; and the guardianship system.
6. What is the significance of the murder of Barney McBride, the oilman who went to Washington to seek help for the Osage and of W.W. Vaughan, the attorney who worked with private detectives investigating the murders?
7. What does Grann's portrait convey about J. Edgar Hoover? What traits stand out and what do they foretell about Hoover's future as director of the FBI?
8. In what ways does Tom White combine the qualities of the Old West and of the modern bureaucratic system Hoover is trying to create? How does this influence the steps he takes in investigating the murders? How do the various views of White, including the stories of his childhood and his work as a Texas Ranger, shape your impressions of him? Would you define him as the hero of the book?
9. How were manufactured evidence, suborned testimony, and false confessions used to divert the FBI investigation? What role did independently hired private eyes and informants play in the search for the truth?
10. The crimes in Osage County involved many levels of deception and betrayal. In addition to the actual conspirators, who else either directly profited from the crimes or was silently complicit in them? In what ways did accepted mores encourage the corruption that plagued the investigation?
11. What role did new methods of criminal investigation play in uncovering the guilty parties? In addition to introducing up-to-date forensic science, how did Hoover use the case to transform the Bureau of Investigation and simultaneously enhance his own image?
12. During Hale's trial, a member of the Osage tribe said, "It is a question in my mind whether this jury is considering a murder case or not. The question for them to decide is whether a white man killing an Osage is murder—or merely cruelty to animals." Why does this observation resonate beyond the immediate circumstances?
13. Perhaps the most chilling aspect of *Killers of the Flower Moon* is the marital and familial connections between murderers and their victims. What explains Ernest Burkhart's actions even as he remained married to and had children with Mollie? How does Grann bring to life the particular horror of crimes committed within a family and a close-knit community?
14. What does the evidence Grann uncovered when he visited Osage County in 2012 reveal about the lasting legacy of the "Reign of Terror"?
15. *Killers of the Flower Moon* combines the fast pace of a true-life murder mystery with the scope and detail of a narrative history. How does Grann integrate these different aspects of the book?



16. We are familiar with many American crimes and criminals during the early twentieth century from movies, books, and television shows. Why do you think the story of the Osage murders hasn't received similar attention?

17. Are there recent examples of racial prejudice and injustice that parallel those described in *Killers of the Flower Moon*? What has changed about the approach taken by law enforcement? About the attitudes expressed by the white community in the face of racial or religious discrimination? In what ways have things remained the same?

(For a complete list of available reading group guides, and to sign up for the Reading Group Center newsletter, visit www.readinggroupcenter.com)

About this Author

David Grann is a bestselling author of titles including *Killers of the Flower Moon* and *The Wager* and staff writer at *The New Yorker*.

Read Grann's full biography at CHPL.org/stern.

Suggested Reading

Peter Cozzens, *The Earth Is Weeping*;

Dee Brown, *Bury My Heart at Wounded Knee*;

Dennis McAuliffe, Jr., *Bloodland: A Family Story of Oil, Greed and Murder on the Osage Reservation*;

Daniel J. Sharfstein, *Thunder in the Mountains*;

Tim Weiner, *Enemies: A History of the FBI*;

John Joseph Matthews, *Sundown*.


cincinnati
public
library


THE
LIBRARY
FOUNDATION
OF CINCINNATI & HAMILTON COUNTY

CHPL.org/stern